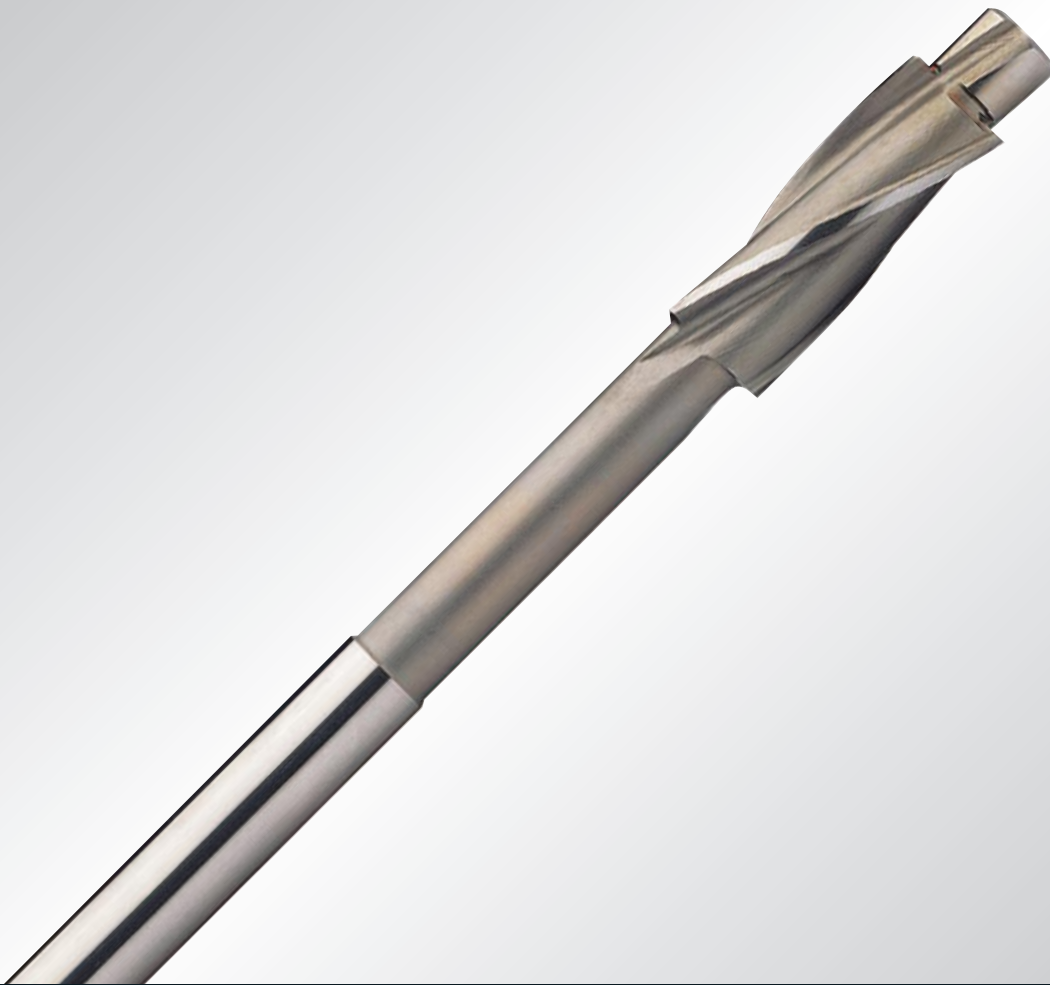


HSS



Being the best through innovation



COUNTERBORES

- 普通用途
General Purpose

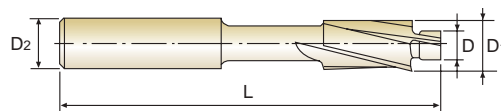


HSS-E, 平头螺钉(180°)用三刃沉孔铰刀

HSS-E, 3 FLUTE COUNTERBORES for 180° CAPSCREW

▶ 带整体导柱铰刀用于模具加工中螺帽或导管安装面的加工。

▶ The counterbores with solid pilot are designed for machining as fillister screw caps or ejector caps in molds.



P1047

中等 / MEDIUM

单位(Unit) : mm

型号 EDP No.	系列号 ITEM No.	螺丝尺寸 Screw Size	导杆直径 Pilot Diameter D(e8)	刃部直径 Cutter Diameter D1(z9)	柄部直径 Shank Diameter D2(h9)	全长 Overall Length L
PLAIN	PLAIN					
EL950003	YG54M3-M	M3	3.4	6.0	5	71
EL950035	YG54M3.5-M	M3.5	3.9	6.5	5	71
EL950004	YG54M4-M	M4	4.5	8.0	5	71
EL950005	YG54M5-M	M5	5.5	10.0	8	80
EL950006	YG54M6-M	M6	6.6	11.0	8	80
EL950008	YG54M8-M	M8	9.0	15.0	12.5	100
EL950010	YG54M10-M	M10	11.0	18.0	12.5	100
EL950012	YG54M12-M	M12	14.0	20.0	12.5	100

精加工 / FINE

单位(Unit) : mm

型号 EDP No.	系列号 ITEM No.	螺丝尺寸 Screw Size	导杆直径 Pilot Diameter D(e8)	刃部直径 Cutter Diameter D1(z9)	柄部直径 Shank Diameter D2(h9)	全长 Overall Length L
PLAIN	PLAIN					
EL950901	YG54M3-F	M3	3.2	6.0	5	71
EL950902	YG54M3.5-F	M3.5	3.7	6.5	5	71
EL950903	YG54M4-F	M4	4.3	8.0	5	71
EL950904	YG54M5-F	M5	5.3	10.0	8	80
EL950905	YG54M6-F	M6	6.4	11.0	8	80
EL950906	YG54M8-F	M8	8.4	15.0	12.5	100
EL950907	YG54M10-F	M10	10.5	18.0	12.5	100
EL950908	YG54M12-F	M12	13.0	20.0	12.5	100

攻丝前 / BEFORE THREADING

单位(Unit) : mm

型号 EDP No.	系列号 ITEM No.	螺丝尺寸 Screw Size	导杆直径 Pilot Diameter D(e8)	刃部直径 Cutter Diameter D1(z9)	柄部直径 Shank Diameter D2(h9)	全长 Overall Length L
PLAIN	PLAIN					
EL950909	YG54M3-T	M3	2.5	6.0	5	71
EL950910	YG54M3.5-T	M3.5	2.9	6.5	5	71
EL950911	YG54M4-T	M4	3.3	8.0	5	71
EL950912	YG54M5-T	M5	4.2	10.0	8	80
EL950913	YG54M6-T	M6	5.0	11.0	8	80
EL950914	YG54M8-T	M8	6.8	15.0	12.5	100
EL950915	YG54M10-T	M10	8.5	18.0	12.5	100
EL950916	YG54M12-T	M12	10.2	20.0	12.5	100

DIN 7160 & 7161规定的精度

Tolerances according to DIN 7160 & 7161

公称直径单位 / Nominal-Diameter in mm					公称直径单位 / Nominal-Diameter in mm				
	from 1 to 3	over 3 to 6	over 6 to 10	over 10 to 18		from 6 to 10	over 10 to 14	over 14 to 18	over 18 to 24
精度范围单位 / Tolerance range in μ m					精度范围单位 / Tolerance range in μ m				
e8	- 14	- 20	- 25	- 32	z9	+ 78	+ 93	+ 103	+ 125
	- 28	- 38	- 47	- 59		+ 42	+ 50	+ 60	+ 73
h9	0	0	0	0					
	- 25	- 30	- 36	- 43					



HSS-E, 平头螺钉(180°)用三刃沉孔铰刀

HSS-E, 3 FLUTE COUNTERBORES for 180° CAPSCREW

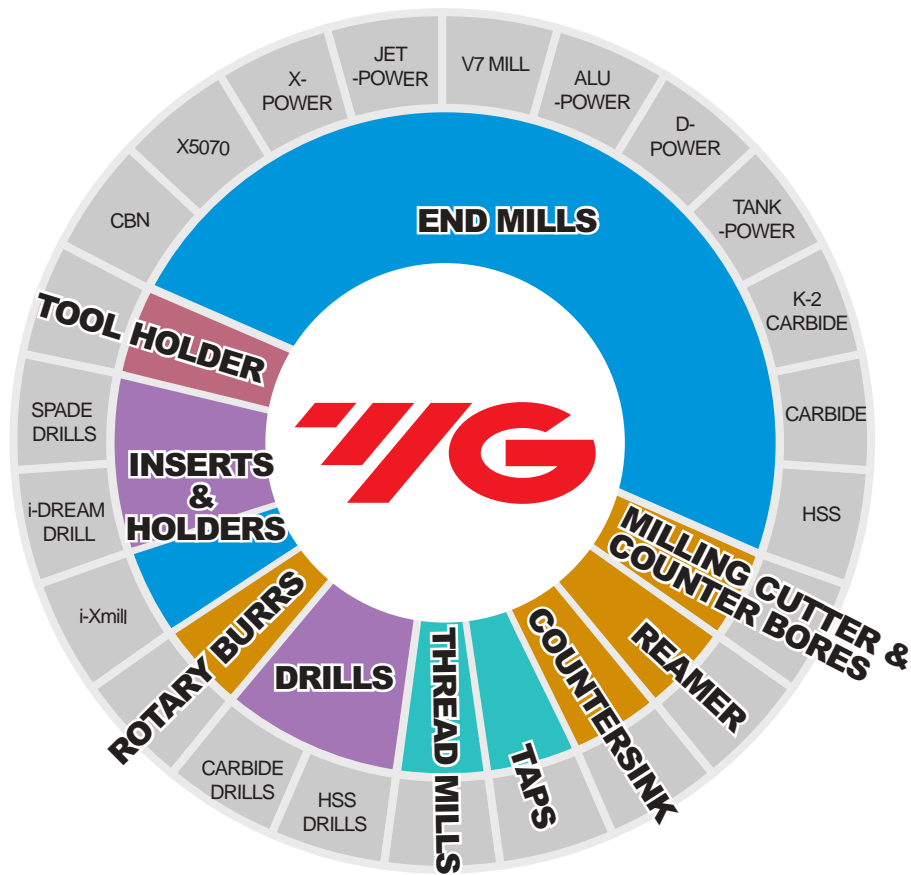
REAMERS

COUNTER
SINKSCOUNTER
BORESROTARY
BURRS

EL950 SERIES

材质	铝&铝合金	碳钢, 合金钢	碳钢, 合金钢, 工具钢	碳钢, 合金钢, 工具钢	碳钢, 合金钢, 工具钢
MATERIAL	ALUMINUM & ALUMINUM ALLOYS	CARBON STEELS ALLOY STEELS	CARBON STEELS ALLOY STEELS TOOL STEELS	CARBON STEELS ALLOY STEELS TOOL STEELS	CARBON STEELS ALLOY STEELS TOOL STEELS
HARDNESS			~ HRC20	HRC20 ~ HRC35	HRC35 ~ HRC40
STRENGTH		~ 500N/mm ²	500 ~ 800N/mm ²	800 ~ 1100N/mm ²	1100 ~ 1300N/mm ²
CUTTER DIAMETER	RPM	RPM	RPM	RPM	RPM
6.0	2100	590	480	380	320
6.5	2100	590	480	380	320
8.0	1700	470	380	300	250
10.0	1200	380	320	260	170
11.0	1100	300	240	190	160
15.0	840	240	195	155	130
18.0	670	190	160	120	80
20.0	550	160	125	95	70

RPM = rev./min. (转速/分钟)



Challenge Toward a Global Leader-
YG-1 Leads the World Market.